



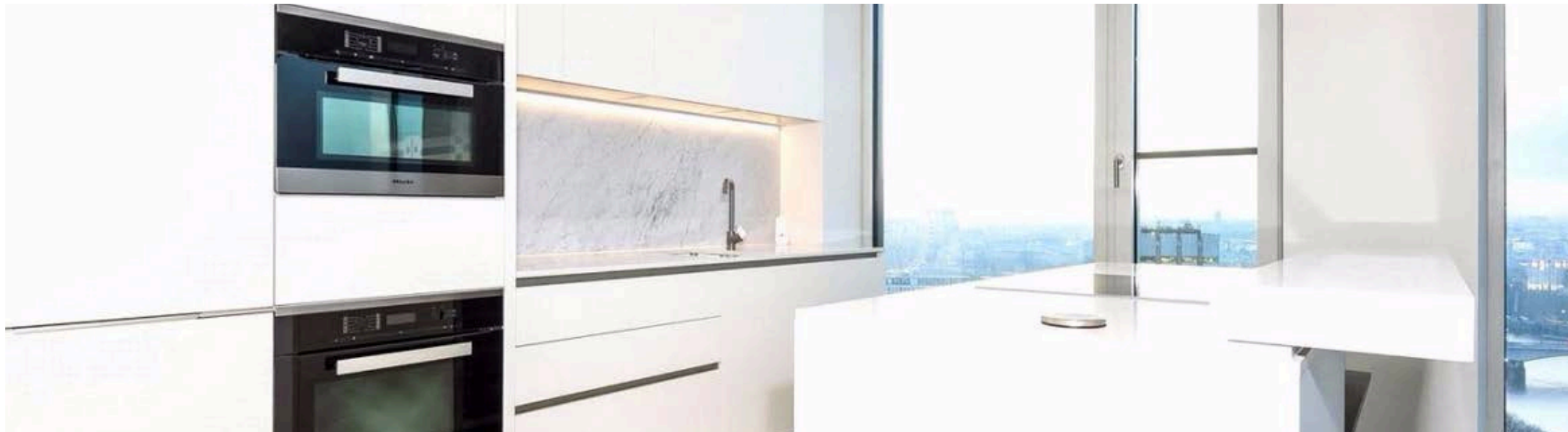

COLDWELL BANKER
SOUTHBANK

Apartment For sale £2,200,000

1 Reception

 2 Bathrooms

 2 Bedrooms



This fabulous modern apartment boasts a fully fitted, impressive kitchen that seamlessly connects to an open-plan reception room, perfect for entertaining. The apartment offers stunning northwest dual aspect views of the River Thames, the London Eye, Houses of Parliament, and other iconic landmarks. With floor-to-ceiling windows throughout the 1,168 sq ft apartment, the reception area is bright and spacious, making the most of natural light.

Southbank Tower is a striking architectural landmark located on London's cultural mile. Residents benefit from high-speed lift access, an indoor swimming pool, a fully equipped gym, and a wealth of modern on-site amenities. On the 10th floor, you'll find a residents' business center, an entertaining lounge, and a roof terrace that provides breathtaking panoramic views of London. A cinema room is also available, all designed to elevate the living experience for residents.

This prestigious building is ideally situated between the Royal Festival Hall and Shakespeare's Globe, adjacent to the iconic Sea Containers House, home to the Mondrian Hotel. With a 24-hour concierge service, residents enjoy convenient access to excellent transport links, including Southwark and Blackfriars Underground stations, just 0.4 miles away, allowing for easy and quick journeys across Central London.

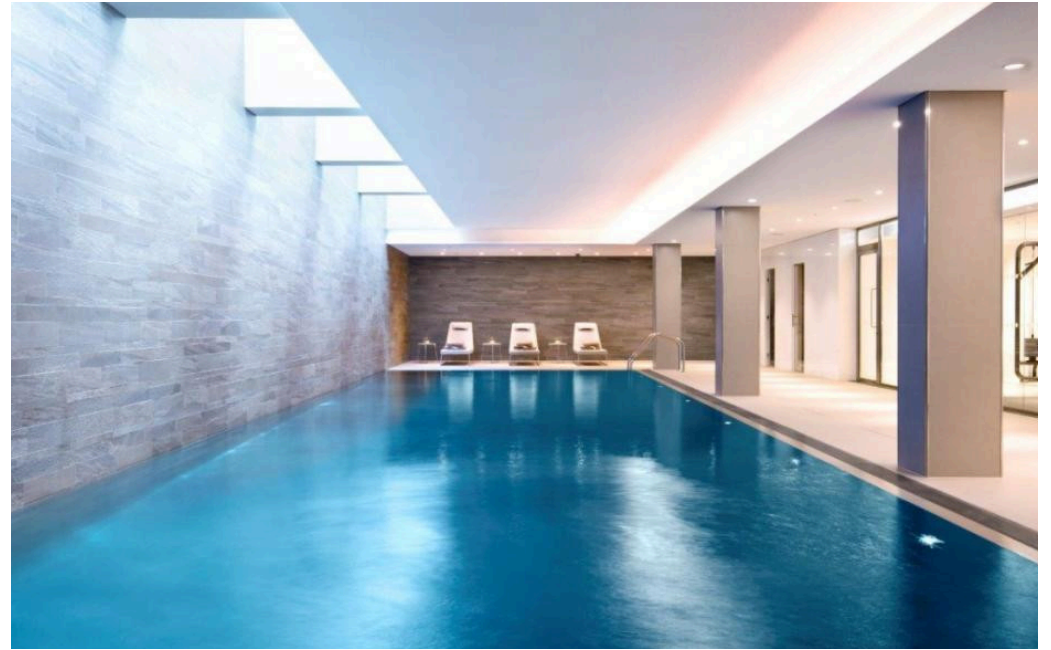
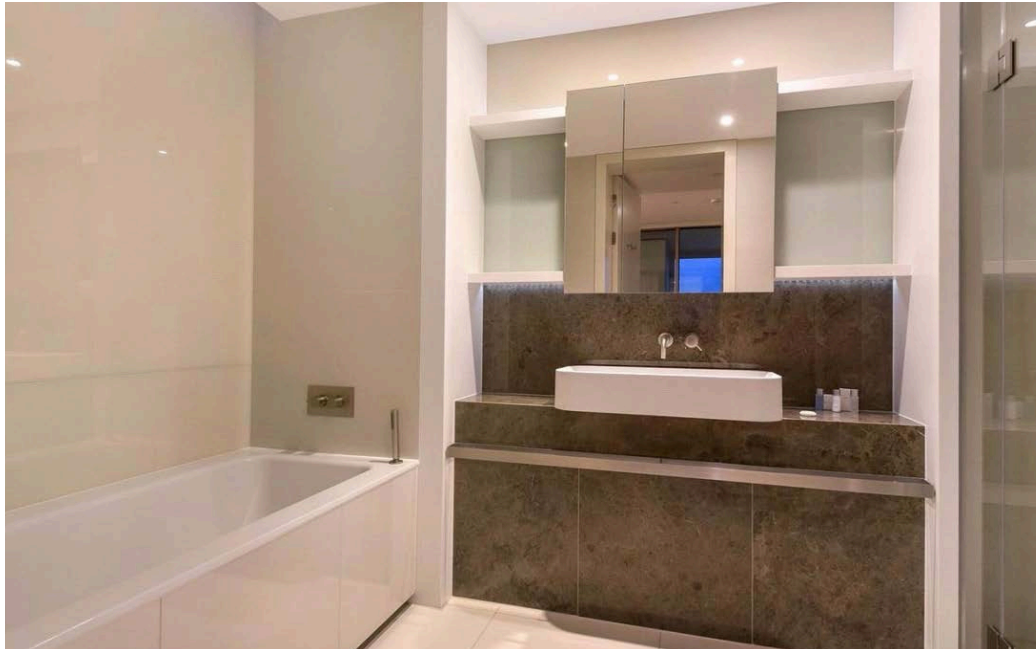
The surrounding area offers a wealth of local shops, parks, garden squares, and amenities, while being just moments from the River Thames. Residents are also within easy reach of the vibrant theatres, restaurants, and attractions of Covent Garden, the trendy Soho district, the shopping hub of Oxford Street, and the city's renowned green spaces and historic squares.

Features :

- Air Conditioning
- Cinema Room
- Close to public transport
- Communal Garden
- Concierge
- En suite
- Fitted Kitchen
- Gym



Southbank Tower, London, SE1



Southbank Tower, London, SE1

Upper Ground, London, SE1

Gross internal floor area (approx):
110.8 sq m / 1193 sq ft For Identification only - Not to scale
Niche Communications



Twenty sixth floor



Coldwell Banker Southbank

Ground Floor Office

9 Belvedere road

LONDON SE1 8YL

020 3600 1906

southbank@coldwellbanker.co.uk

Energy Efficiency Rating		Current	Potential
Very energy efficient - lower running costs			
(92-100) A			
(81-91) B		84	84
(69-80) C			
(55-68) D			
(39-54) E			
(21-38) F			
(1-20) G			
Not energy efficient - higher running costs			

