



Apartment For sale £2,000,000

1 Reception

 **2 Bathrooms**

 **2 Bedrooms**



A luxurious 2-bedroom plus study and 2-bath apartment is now available for sale in the iconic Southbank Tower SE1, featuring stunning north-east facing views of the Shard and St. Paul's Cathedral. This exceptional residence offers 1,344 sq ft of internal space, complemented by a 24-hour concierge, pool, residents' lounge, cinema, and a communal garden with a roof terrace.

The fabulous apartment encompasses a fully fitted, impressive kitchen with an open-plan reception room designed for entertaining, showcasing northerly river views of the Shard, St. Paul's, and other famous London landmarks.

The reception area is bathed in natural light pouring in through the floor-to-ceiling windows throughout the space. Both the main bathroom and the ensuite are fully fitted to a superb standard. Each of the generously sized bedrooms includes an abundance of storage space, which is true for the entire apartment, as it makes excellent use of the available space.

This apartment is of outstanding standard. Southbank Tower features a confident, soaring design that serves as a distinctive landmark on London's cultural mile. The building is ideally located between the Royal Festival Hall and Shakespeare's Globe, adjacent to the iconic Sea Containers House, now home to the Mondrian Hotel. With Southwark and Blackfriars Underground stations within a short distance, residents enjoy quick access to Central London and connecting train stations to airports and other parts of England.

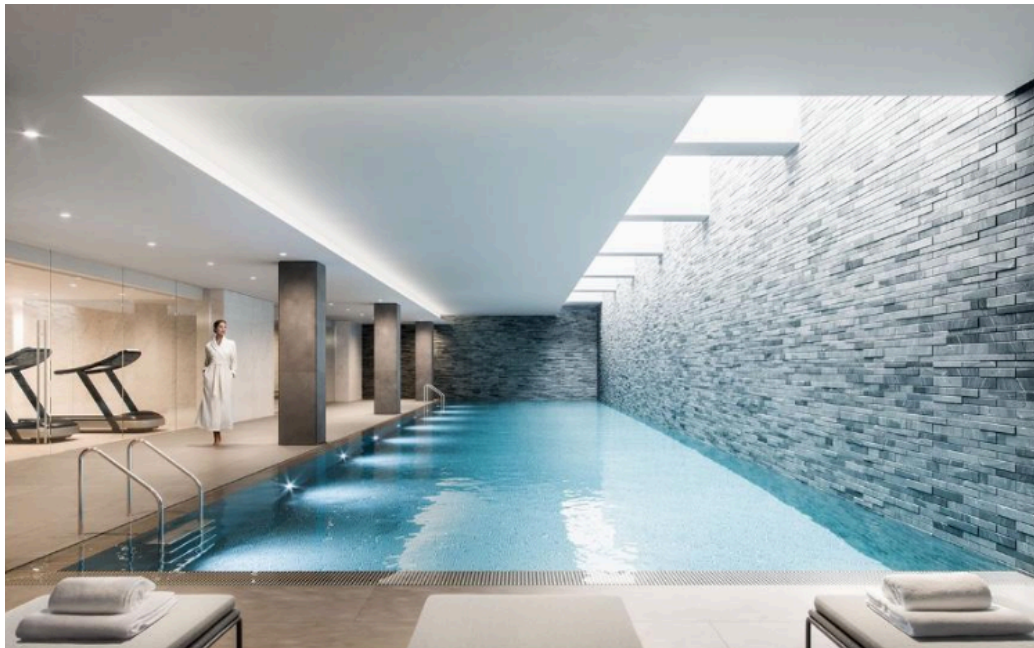
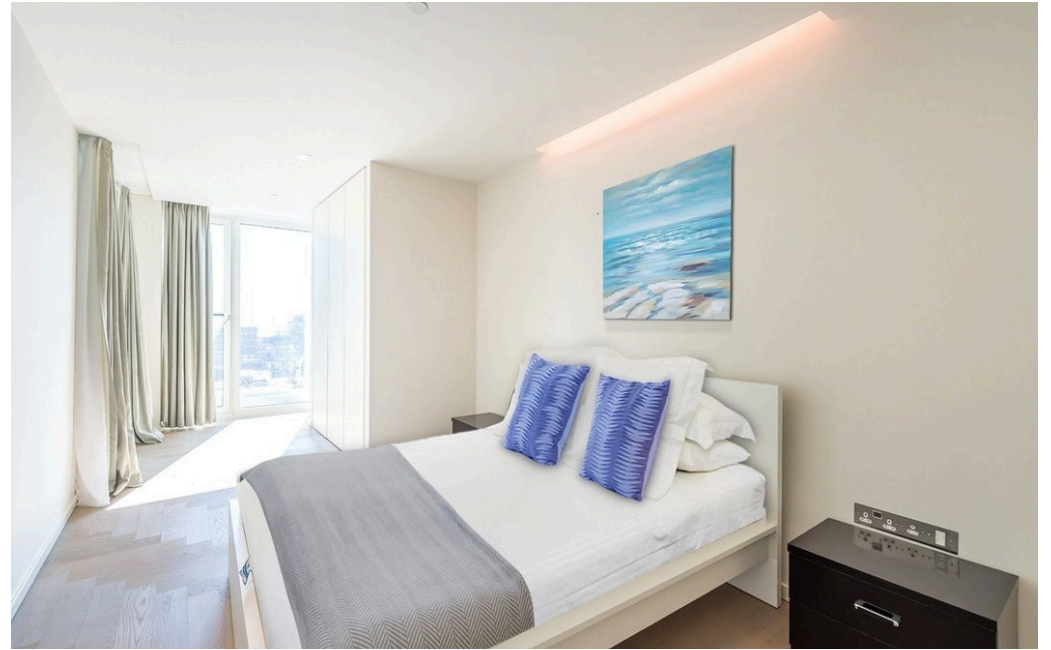
Southbank Tower residents benefit from high-speed lift access, an indoor swimming pool, and a fully fitted gym. Further situated on the 10th floor with breathtaking views of London, is a state-of-the-art Residents' Business Centre, Residents' Entertaining Lounge,

Features :

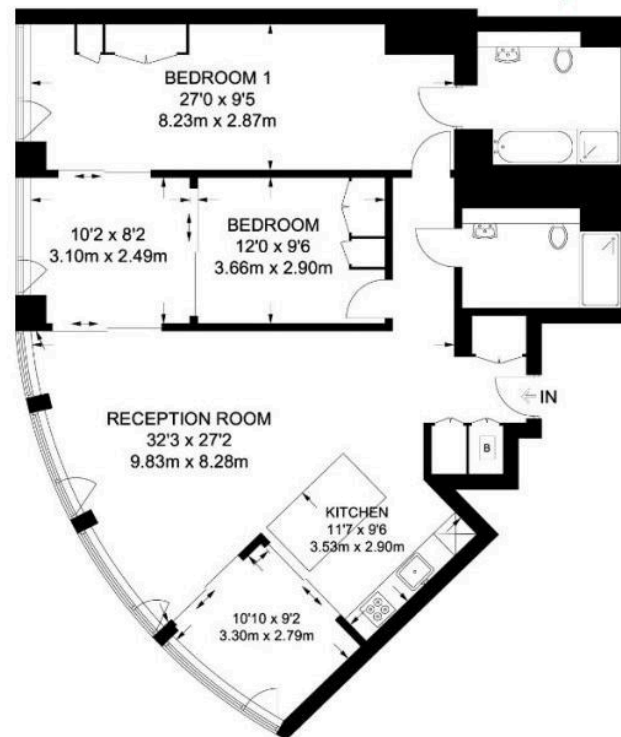
- Air Conditioning
- Cinema Room
- Close to public transport
- Concierge
- Double glazing
- En suite
- Gym
- River view



Southbank Tower, London, SE1



Southbank Tower, London, SE1



Coldwell Banker Southbank
Ground Floor Office
9 Belvedere road
LONDON SE1 8YL
020 3600 1906
southbank@coldwellbanker.co.uk

Energy Efficiency Rating		
	Current	Potential
Very energy efficient - lower running costs		
(92-100) A		
(81-91) B	82	82
(69-80) C		
(55-68) D		
(39-54) E		
(21-38) F		
(1-20) G		
Not energy efficient - higher running costs		

