



COLDWELL BANKER
SOUTHBANK

Apartment For sale £5,161,000

1 Reception

 3 Bathrooms

 3 Bedrooms



A luxury 3 bed, 3 bath duplex apartment located in Southbank Tower is available for sale. The property has the most desirable westerly views of London, the River, Big Ben and the London Eye and benefits from 1,985 sq ft of internal living space and includes underground parking

Once you enter the duplex apartment you are led into the kitchen area and fully furnished living room. The kitchen is perfectly finished to an outstanding standard. All bedrooms comfortably fit queen-sized beds and offer an abundance of built-in storage. The master bedroom boasts a large en-suite, complete with his and hers showers and wash basins. The bathtub itself overlooks the stunning views of London city.

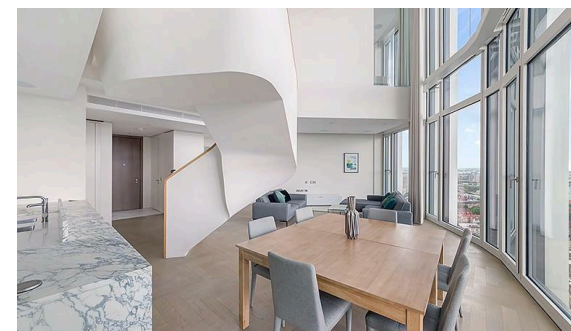
The apartment is of an outstanding standard.

Southbank Tower residents benefit from high-speed lift access, an indoor swimming pool, and a fully fitted gym for residents. Further situated on the 10th floor with breathtaking views of London, is a state of art Residents' Business centre, Resident's Entertaining Lounge, Communal Roof garden and Cinema Room.

Southbank Tower is a confident, soaring design that is a distinctive landmark on London's cultural mile. The building is based between The Royal Festival Hall and Shakespeare's Globe and adjacent to the iconic Sea Containers House, now home to the Mondrian hotel.

Features :

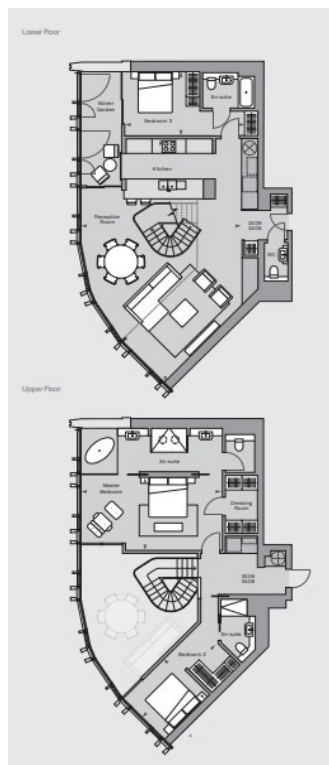
- Air Conditioning
- Close to public transport
- Concierge
- En suite
- Fitted Kitchen
- Fully Furnished
- Gym
- River view



Southbank Tower, London, SE1



Southbank Tower, London, SE1



Coldwell Banker Southbank
Ground Floor Office
9 Belvedere road
LONDON SE1 8YL
020 3600 1906
southbank@coldwellbanker.co.uk

Energy Efficiency Rating		
	Current	Potential
Very energy efficient - lower running costs		
(92-100) A		
(81-91) B	83	83
(69-80) C		
(55-68) D		
(39-54) E		
(21-38) F		
(1-20) G		
Not energy efficient - higher running costs		

