



COLDWELL BANKER  
SOUTHBANK

**Apartment For sale £6,165,000**

**1 Reception**

 **3 Bathrooms**

 **3 Bedrooms**



A luxury three-bedroom, three-bathroom duplex apartment located on a very high floor of Southbank Tower. The property has the most desirable views of London facing the River, with views of St Puals and The Shard. The property benefits from around 2375 sq ft of internal living space and some fabulous views of London landmarks and is available for sale.

Once you enter the duplex apartment you are led into the kitchen area and fully furnished living room. The kitchen is perfectly finished to an outstanding standard. All bedrooms comfortably fit queen-sized beds and offer an abundance of built-in storage. The master bedroom boasts a large en-suite, complete with his and hers showers and wash basins. The bathtub itself overlooks the stunning views of London city.

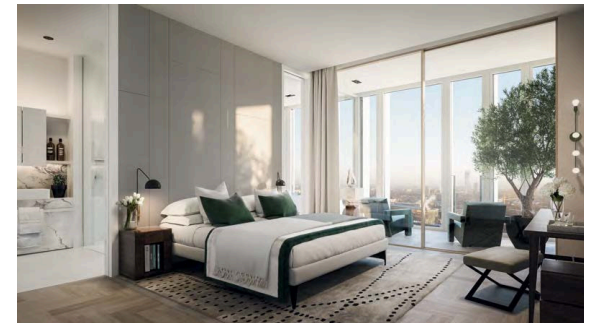
The apartment is of an outstanding standard.

Southbank Tower residents benefit from high-speed lift access, an indoor swimming pool, and a fully fitted gym for residents. Further situated on the 10th floor with breathtaking views of London, is a state-of-the-art Residents' Business centre, Resident's Entertaining Lounge, Communal Roof garden and Cinema Room.

Southbank Tower is a confident, soaring design that is a distinctive landmark on London's cultural mile. The building is based between The Royal Festival Hall and Shakespeare's Globe and adjacent to the iconic Sea Containers House, now home to the Mondrian hotel.

## Features :

- Air Conditioning
- Cinema Room
- Close to public transport
- Concierge
- En suite
- Gym
- River view
- Swimming Pool

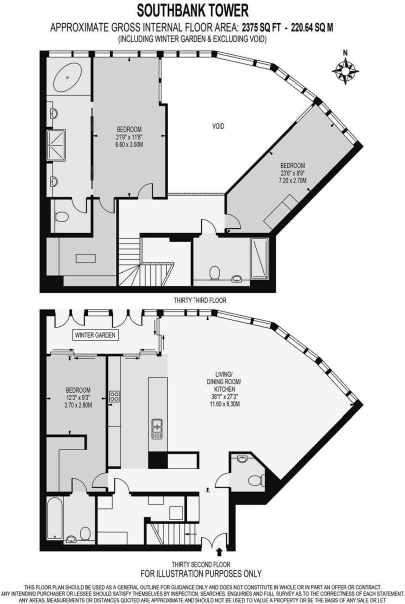




## Southbank Tower, London, SE1



Southbank Tower, London, SE1



32 02 Southbank Tower - pdf.pdf[26/10/2022 12:48:37]



Coldwell Banker Southbank  
Ground Floor Office  
9 Belvedere road  
LONDON SE1 8YL  
020 3600 1906  
southbank@coldwellbanker.co.uk

Energy Efficiency Rating		
	Current	Potential
Very energy efficient - lower running costs		
(92-100) <b>A</b>		
(81-91) <b>B</b>	83	83
(69-80) <b>C</b>		
(55-68) <b>D</b>		
(39-54) <b>E</b>		
(21-38) <b>F</b>		
(1-20) <b>G</b>		
Not energy efficient - higher running costs		

