



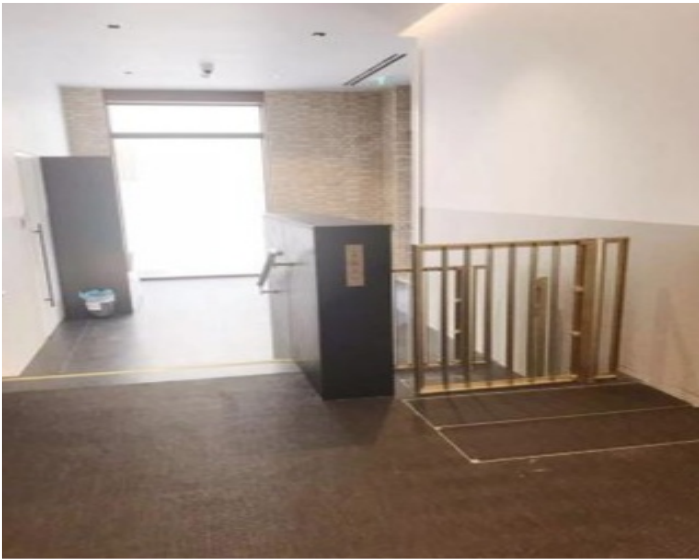
Abernethy House, 47 Bartholomew Close, London EC1A 7BD

A stunning 1 bedroom, 1 bathroom apartment located on the 1st floor of a exceptional brand new development Abernethy House in Barts Square. Measuring 613 sqft, its spacious layout features an open plan reception room with a luxury fitted kitchen and a lovely bedroom. This luxurious apartment has a balcony. Residents will have exclusive use of a range of on-site facilities including but not limited to five star twenty-four hour concierge service, private meeting room, cinema with lounge bar, and a resident's lounge overlooking the communal garden. Barts Square is a short distance away from the heart of the City. It sits on a long-established route between the Smithfield Conservation Area and St Paul's.

Bedroom : En Suite Shower Room : Reception Room : Kitchen : Balcony : 24 Hour Concierge :
Leisure Facilities : Communal Garden : EPC Rating TBC

Subject To Contract

Leasehold



Terms and Conditions

Tenure Leasehold

Disclaimer

These particulars have been produced as a general guide for this property only and no other purpose. They are not an offer or contract. You should not rely on statements in these particulars or by word of mouth or in writing as being factually accurate about the property, its condition or its value. Neither any primary agent or joint agent has any authority to make or give any representations or warranties in relation to the property, and accordingly any information given is entirely without responsibility on the part of the agents or seller(s).

The photographs show only certain parts of the property as they appeared at the time they were taken. Any areas, measurements and distances given are approximate only. Any reference to alterations to, or use of, any part of the property does not mean that any necessary planning, building regulations or other consent has been obtained nor have any services, equipment or facilities been tested. A buyer should satisfy themselves by inspection or otherwise. The VAT position relating to the property may change without notice. Please contact us for further information regarding the property redress scheme which we are a member of.

