

## Wharncliffe Gardens, London, SE25 - Guide: £450,000

Wooden Flooring

End Of Terrace

Bi-Fold Doors

Stunning Kitchen

Fully Refurbished

Chain Free

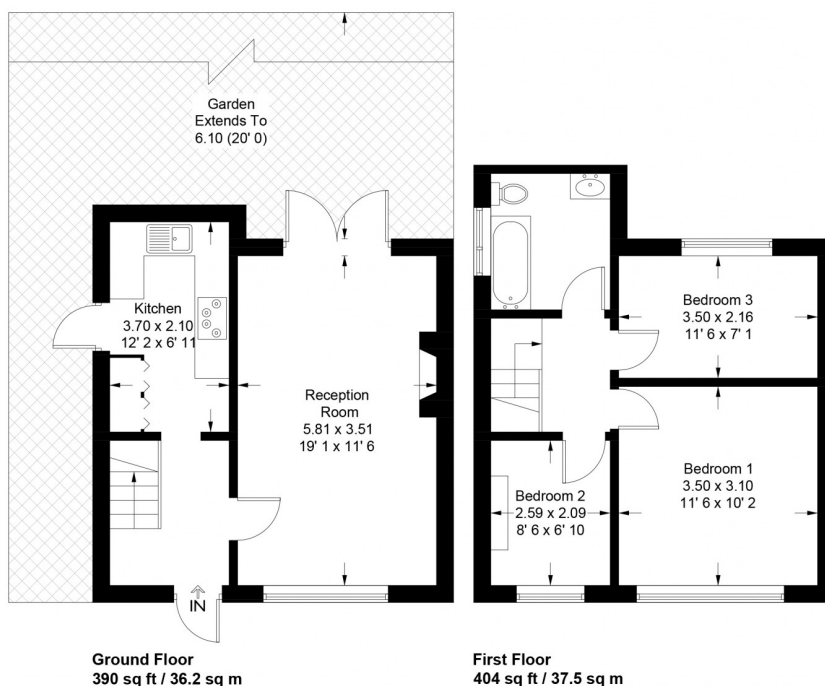
Excellent Location

Family Home



### Wharncliffe Gardens

Approximate Gross Internal Area = 794 sq ft / 73.7 sq m



Not to scale, for guidance only and must not be relied upon as a statement of fact  
All measurements and areas are approximate only and have been prepared in  
accordance with the current edition of the RICS Code of Measuring Practice